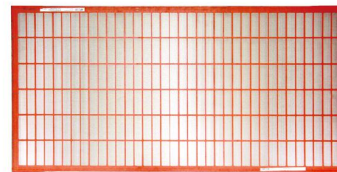
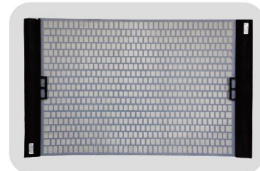
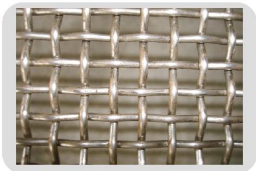




HENGYING WIRE CLOTH

HEBEI HENGYING WIRE CLOTH CO.,LTD.



Add: NO.17 JingWu Road, High and New Tech Development Zone,Anping County,Hebei China.
Tel : 0086-318-7565111 7537666
Fax: 0086-318-7537111
Http: //www.hengyingwirecloth.com
E-mail: sales@hengyingwirecloth.com

2018/12/01



COMPANY Profile



Hebei Hengying Wire Cloth Co., Ltd. is located in High and New Tech Development Zone, Anping County which is well known for "The hometown of wire mesh in China", in Hebei Province. After all staff's twenty years of unremitting efforts, the company has become the one of 60 million CNY fixed assets . It is also an integrated enterprise which contains research, production and sales.

Our company, Hebei Hengying Wire Cloth Co., Ltd. produces a variety of specifications of stainless steel wire meshes, solid control equipment, shale shaker, shale shaker screens, sand control screens, wire wrapped welding pipes, steel gratings and other products with the brand of Hengying, which are sold in major cities and major oilfields in China and many other countries around the world. And they have been highly praised by the domestic and international customers.

Hebei Hengying Wire Cloth Co., Ltd. strives for existence by quality, for development by reputation. Our company has high-quality products, best price, solid reputation and reliable after-sale services. On the basis of mutually beneficial and friendly cooperation, we really hope to establish good business relationship and create a better future with old and new customers at home and abroad.



Enterprise Qualification

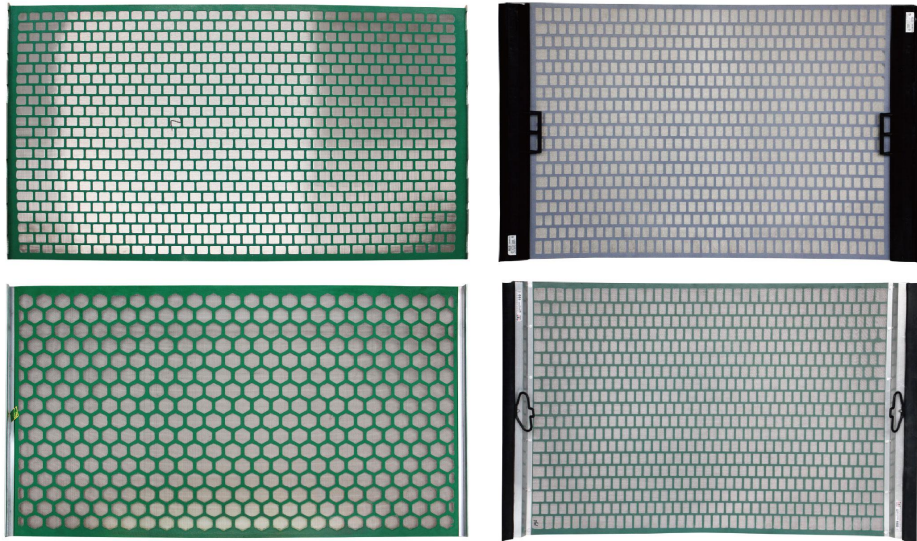


Hook Strip Flat Screen



Hook Strip Flat Screen is constructed with two or three layers of stainless steel wire cloths which bonded to a steel support plate. This kind of sieving screen has many characteristics as follows:

1. Every wire cloth in the sieving screen has different meshes, and accurate collocation can make the screen have better effect. In the sieving screen with different meshes, the hole size of the support plate is different, so as to get the most effective area on the condition of bearing enough force.
2. The thick wire cloth with less meshes at the bottom of the sieving screen combines steel support plate into a single closely, so as to enhance the strength of the whole screen and prolong its life.
3. The wire cloth is divided into independent small surface by the grid of steel support plate, which can prevent excessive expansion of local damage. At the same time, equipped with a special rubber plug to repair damage, it can save time and reduce the cost.



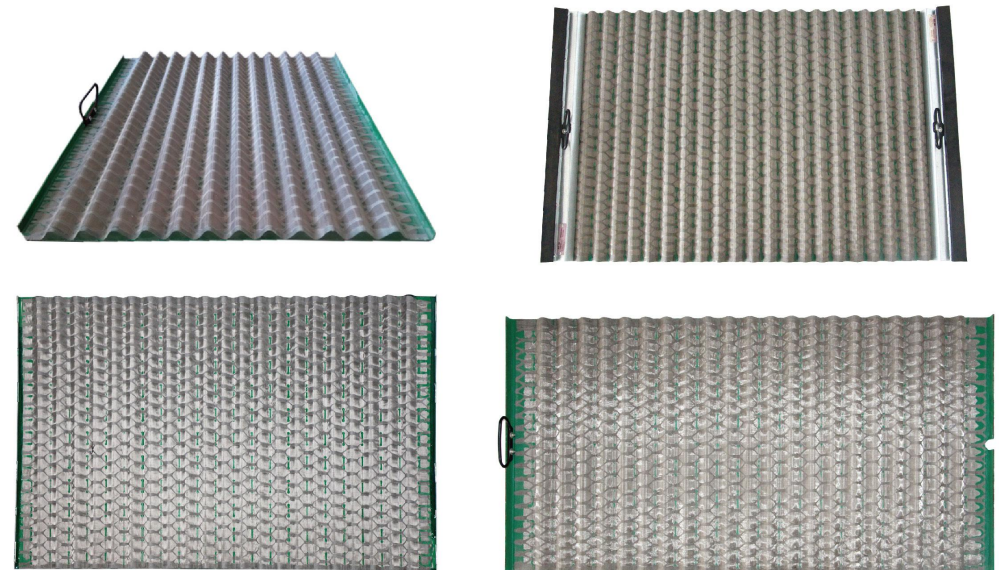
Screen Model	Range of Mesh	Dimension (Width x Length)	Brand & Model of Shaker
HSP-1	20-325	697 x 1053mm	FLC2000
HSP-2	20-325	695 x 1050mm	FLC500
HSP-3	20-325	697 x 846 mm	FLC313M
HSP-4	20-325	903 x 1155mm	BEM-3
HSP-5	20-325	1212 x 1141mm	ALS-2
HSP-6	20-325	915 x 1150mm	LCM-2D
HSP-7	20-325	700 x 1165mm	S250

Wave® Screen



This kind of sieving screen has many characteristics as follows:

1. Wave® screen has large effective area, and drilling fluid is handled in high-efficiency by using it.
2. Every wire cloth in the sieving screen has different meshes, and accurate collocation can make the screen have better effect.
3. Stainless steel wire cloth is wave®, and closely holds metal support plate together. The effective area is up to 125% to 150% of the flat screen with the same specification, so as to improve the quality of drilling fluid and increase the production.



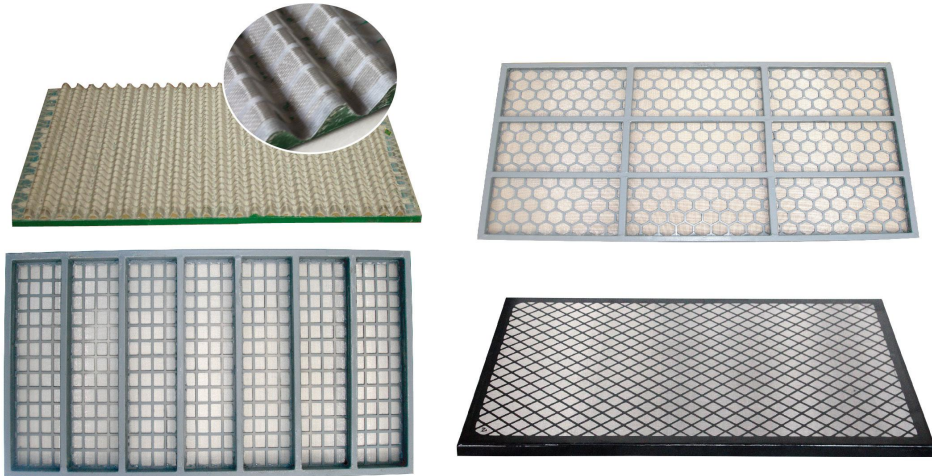
Screen Model	Range of Mesh	Dimension(W*L)	Brand&Model of shaker
HSB-1(WAVE®)	20-325	697 x 1053mm	FLC2000
HSB-2(WAVE®)	20-325	695 x 1050mm	FLC500
HSB-3(WAVE®)	20-325	710 x 626mm	FLC600
HSB-4(WAVE®)	20-325	567 x 1070mm	D-HYP

Steel Frame Screen



The features of this type:

1. Steel frame screen is a kind of more commonly used oil vibrating sieving mesh, which is mainly composed of steel frame and 2 or 3-layers stainless steel wire cloths.
 2. Every layer of wire cloth has different meshes, accurately and reasonably making screening more micromesh.
 3. It forms a reliable whole, with high-strength steel frame, reinforced supports and moderate tension screening cloth, which greatly enhances the tolerable flow, strength and working life.
 4. Rapid wedge tensioning devices make screen installation more convenient, and save machine halt time for changing. Wire cloth is divided into several independent small cloths to prevent excessive expansion of local damage. At the same time, with a special rubber plug to repair damage, it can save time and reduce use-cost.
- NOTE: All screens in this list can be produced by our company. Screen size is generally provided by customers. Specific dimensions and details may be adjusted according to the order.



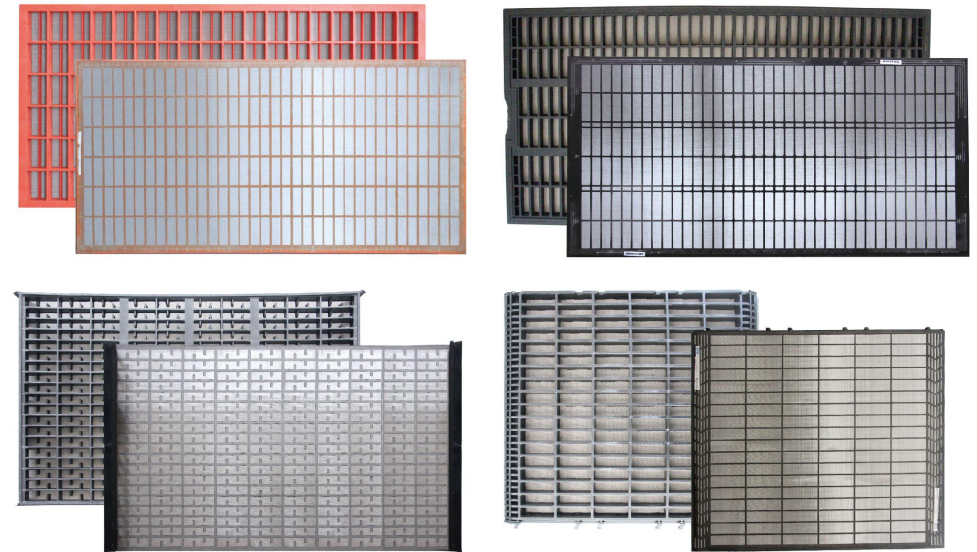
Screen Model	Range of Mesh	Dimension (Width x Length)	Brand & Model of Shaker
HSK-1	20-325	585 x 1165mm	MONGOOSE
HSK-2	20-325	635 x 1253mm	KING COBRA
HSK-3	20-325	913 x 650mm	VSM300
HSK-4	20-325	720 x 1220mm	KTL48 SERIES
HSK-5	20-325	712 x 1180mm	D380
HSK-6	20-325	737*1067mm	FSI 50 & 500 & 5000

Composite Frame Screen



Composite Frame Screen :

1. Composite frame screen is mainly composed of composite frame and 2 or 3-layers stainless steel wire cloths. The wire cloth can be combined with the frame with metal rubber lining, or directly bonded on the frame.
2. Every layer of wire cloth has different meshes, accurately and reasonably making screening more micromesh.
3. High-strength composite frame screen and moderate tensional screening cloth, that form a reliable whole, greatly enhance the tolerable flow.
4. Rapid wedge tensioning devices make screen installation more convenient, and save the machine halt time for changing.
5. Wire cloth is divided into several independent small cloths to prevent excessive expansion of local damage. At the same time, with a special rubber plug to repair damage, it can save time and reduce use-cost.
6. Excellent high-strength composite frames enhance corrosion resistance, have good shock absorption and extend working life of screen.



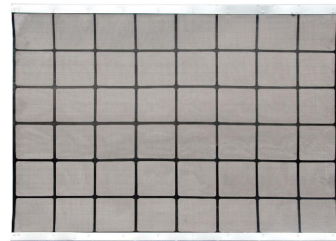
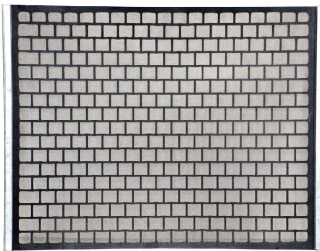
Screen Model	Range of Mesh	Dimension (Width x Length)	Brand & Model of Shaker
HSZ-1/1	20-325	585 x 1165mm	MONGOOSE PT & PRO
HSZ-1/2	20-325	585 x 1165mm	MONGOOSE PT & PRO
HSZ-2/1	20-325	635 x 1250mm	KING COBRA & COBRA
HSZ-2/2	20-325	635 x 1250mm	KING COBRA & COBRA
HSZ-3	20-325	610 x 660mm	MD-2 & MD-3

Hook Strip Soft Screen



The characteristics of the screen are as follows:

1. By 2 to 3 layers of stainless steel wire cloths bonding as a whole without metal foils.
2. Installed on the shaker by hooking, without metal adhesive, increasing effective filtering area.
3. The wire diameter of the bottom layer of the screen mesh is relatively coarse, which plays the roles of screening and supporting with the upper layer and extends the life of the screen.
4. The soft screen, with low price, effective filtration area is bigger than flat screen, but its lift is comparatively short compared with flat screen. It needs to choose different screens, depending on the drilling conditions.

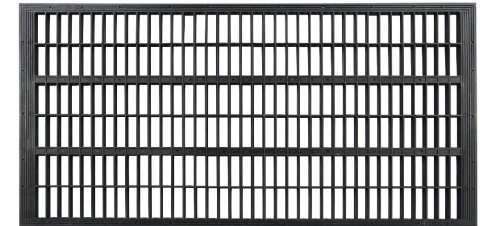
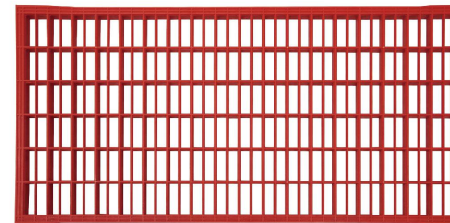


Screen Model	Range of Mesh	Dimension (WidthxLength)	Brand & Model of Shaker
HSF-1	20-250	700x1050mm	FLC2000
HSF-2	20-250	1212x1141mm	SWACO ALS-2
HSF-3	10-80	915x925mm	JSS(USA)
HSF-4	8-120	1514x1225mm	NOV 4x5
HSF-5	20-250	1000x1150mm	NS-115/2
HSF-6	20-250	600x1040mm	NCS-300x2

Polyurethane Frame



Our company has a complete range of composite frame molds, and has our own composite molding frame production workshop, covering injection molds of various specifications of vibrating screens. We can also develop composite molds of various specifications according to customer's requirements.



ZS/Z-1/1A Linear Shale Shaker



Features:

Imported motor

Use imported short motor from Italy which has strong commonality and reliable performance.

Adjustable vibration intensity

Adjust vibration intensity through eccentric block of motor.

Splash prevention

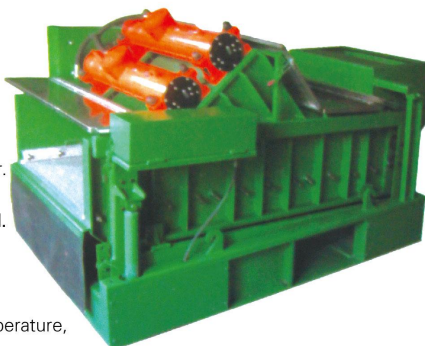
Splash prevention device is made by stainless steel material.

Obliquity adjustment

Adjust obliquity safely hydraulic.

Tensile Spring

high strength, acid resistance, alkali resistance, high temperature, anti-fatigue.



The Economy of Linear Model Shale Shaker

Hengying Linear Model Shale Shaker is especially effective while drilling top-hole sections where heavy and high-volume solids are usually encountered. In these intervals, shakers may generate powerful G-forces and its effective vibrating motion can quickly remove the dense solids from screens and particles from wells.

Linear Shale Shaker

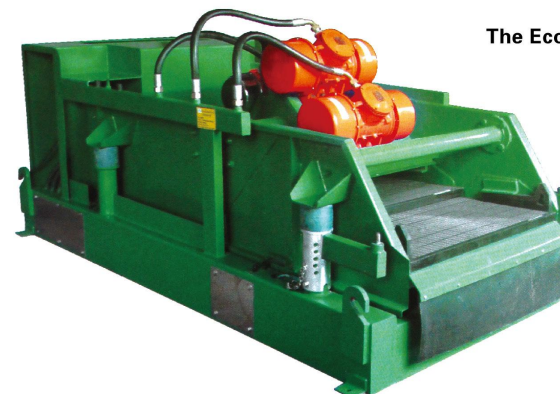
Model	ZS/Z-1	ZS/Z-1A
Deck No.	Single Deck	
Treating Capacity m ³ /h/GPM	113-136/500-600	136-170/600-750
Motor Power KW/HP	2x1.72/2x2.31	2x1.72/2x2.31
Vibrating Strength	≤ 7.4G (Adjustable)	
Deck Adjustment	-1° ~ +6°	-1° ~ +6°
Power	380v/50hz, 460v/60hz Or as customers' needs	
Shaker Screen m ² /ft ²	2.2/24	2.6/28
Shaker Screen mm/in	700x1050 27.6x41.3	760x1150 29.9x45.3
Weir Height mm/in	882/34.7	
Dimension mm/in	2818x1840x1640 111x72.4x64.5	3190x1870x1640 125.6x73.6x64.5
Weight kg/lbs	1815/4000	1930/4255
Remarks	Treating capacity test from mud: 1.2g/cm ³ density & viscosity 45s & API 40 screen for single Deck	



ZS/T-1C Balanced Elliptical Motion Shale Shaker

The Economy of Elliptical Motion Shale Shaker

Hengying elliptical motion shaker is especially effective while drilling top-hole sections where heavy and high-volume solids are usually encountered. In these intervals, shakers may generate powerful G-forces and its effective vibrating motion can quickly remove the dense solids from screens and particles from wells. It also can effectively reduce the consumption of screens at the same time.



Balanced Elliptical Motion Shale Shaker

Model	ZS/T-1
Deck No.	Single Deck
Treating Capacity m ³ /h/GPM	113-136/500-600
Motor Power KW/HP	1.65+1.0/2.21+1.34
Vibrating Strength	≤ 6.5G (Adjustable)
Deck Adjustment	-1° ~ +6°
Power	380v/50hz, 460v/60hz Or as customers' needs
Shaker Screen m ² /ft ²	2.7/29
Shaker Screen mm/in	585x1165/23x45.875
Weir Height mm/in	882/34.7
Dimension mm/in	2818x1840x1640/111x72.4x64.5
Weight kg/lbs	1790x3946
Remarks	Treating capacity test from mud: 1.2g/cm ³ density & viscosity 45s & API 40 screen for single Deck

Features&Benefits:

Uniform elliptical motion at all points on basket is good for reducing the screen pores blocked, improving the percent through screen and treating capacity.
 Hi-speed conveyance of cuttings can prevent screen blocking.
 Maximizes drilling-fluids recovery.
 Drier cuttings.
 Extends screen life.
 Basket angle adjusting device from -1° ~ +6°.
 Wedge compression device can easily change the screens.
 Shale shaker feeder can be weir type and header box.



Material: 302, 304, 304L, 316, 316L stainless steel wire, low carbon steel wire and so on, which can be made according to the customers' requests.

Characteristics: wire wrapped welded screen pipe /water well screen is composed of support bars and profile wires. Support bars can be round, triangle or trapezoid. Profile wires can be triangle wire (V-shaped wire), with fine slot size and high filtering precision. With firm structure, high temperature and corrosion resistance, good mechanical properties, long service life, safe and reliable characteristics and so on, wire wrapped welded screen pipe /water well screen can be used in a variety of media filters.

Usage: wire wrapped welded screen pipe /water well screen is water treatment equipment with slots. It can be used with deep well pumps or submersible pumps together. It can be also used for water treatment equipment, environmental protection, desalination processing of transferring sea water to industrial water and domestic water, running water treatment, water softening process and petrochemical industry, terminal filtration for petrolic products, filtration for chemical acid and sodaliquid and recovery filtration for alcohol and other organic solvents. Features:

Continuous slots significantly increase discharge area, thus providing greater access to water-bearing zone. We can produce this pipe with diameter 80mm-550mm, slot size 0.1mm-10mm, length 50mm-5850mm.

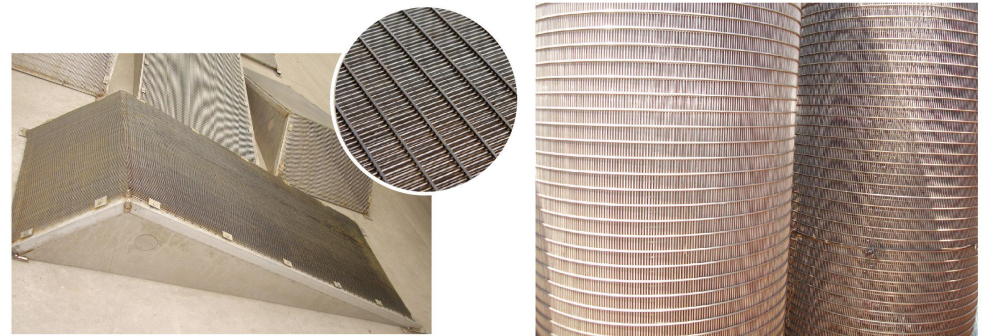
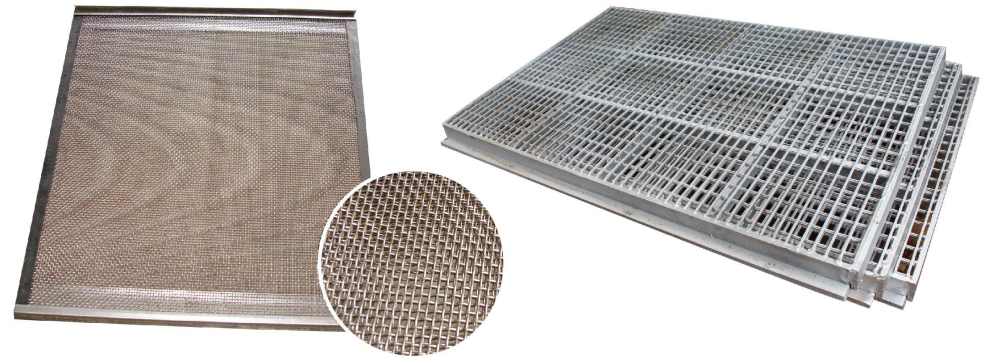


Screen Size	In	2	3	4	5	6	8	10	12	14	16	20
	mm	51	76	102	127	152	203	254	305	356	406	508
Inside Diameter	In	2	3	4	5	6	8	10	12	13 1/8	15	18 3/4
	mm	51	76	102	127	152	203	254	305	333	381	476
Outside Diameter	In	25/8	35/8	45/8	55/8	65/8	85/8	103/4	123/4	14	16	20
	mm	67	92	117	143	168	219	273	324	356	406	508
OD of Female Threaded End	In	23/4	33/4	43/4	53/4	7	91/4	113/8	133/8	----	----	----
	mm	70	95	121	146	178	235	289	340	----	----	----

Profile Wire	▼	▼	▼	▼	▼	▼	▼	●
Width (mm)	1.5	1.5	2.3	2.3	1.8	3.0	3.7	3.3
Height (mm)	2.2	2.5	2.7	3.6	4.3	4.7	5.6	6.3
Support Rod	▼	▼	▼	▼	▼	▼	●	
Width (mm)	2.3	2.3	3.0	3.7	3.3	φ 2.5mm	φ 5mm	
Height (mm)	2.7	3.6	4.7	5.6	6.3			



Mine sieving mesh is a newly developing product in wire mesh industry. It is easy to leak, wear resisting, corrosion resisting, the cross section of net is trapezoidal, the top is narrow, the under is wide, widely used in mine, coal, petroleum, fertilizer, grain, salt, environmental protection, etc.



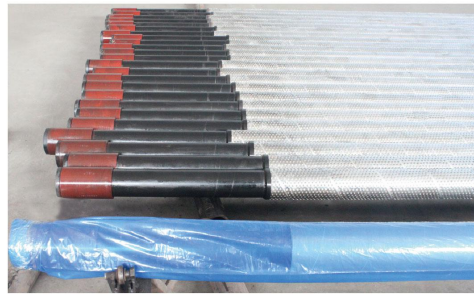
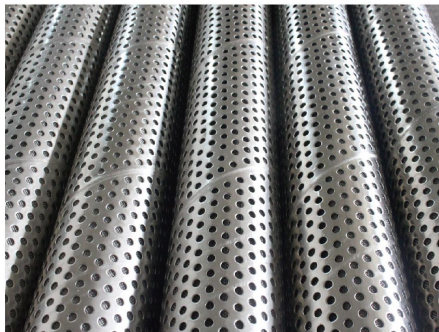
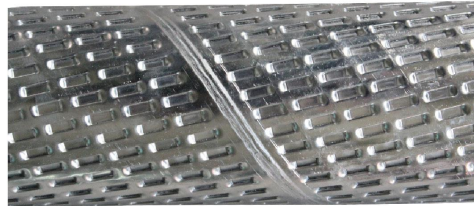
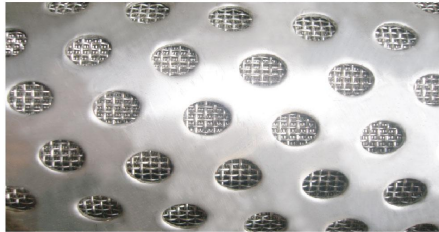
Sand Control Screen



Sand control screen is a new product which is composed of central tube, precise punched slotted screen jacket and stainless steel wire ring. It has characteristics such as exquisite controlled holes, high percentage of open area, strong integral strength, strong resistance to deformation, excellent resistance to corrosion and high reliability etc.

Sphere of Application of Product : Screen can be used for casing completion and liner completion of vertical wells, inclined wells and horizontal wells etc. And it can be used for various oil wells, gas wells and water wells. It can be used as sand control colonnade individually and it can be used in gravel packing.

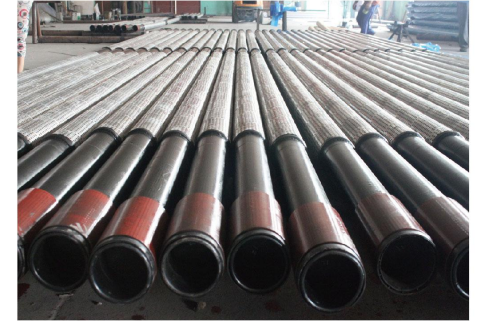
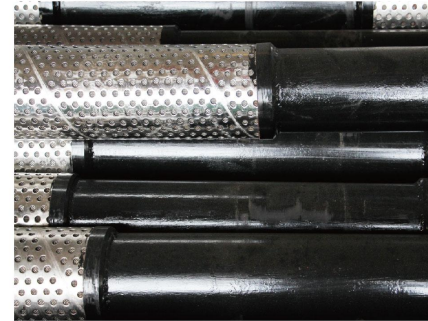
Note: The length of base pipe and the diameter and slot of screen can be changed as per customer's requirement.



Bridge Slotted Screen

The Jacket tube is made of stainless steel wire mesh or punching spiral welded pipe in stainless steel plate or stainless steel V-shaped wire welded pipe. The base pipe is made up of casing pipe or oil tube with API standard. Meanwhile using J55 or N80 petroleum casing pipe for body processing can make the perforated pipes have high strength and deformation resistance. Drilling evenly smooth with no burr.

Whole anti-corrosion treatment which can form a dense protective layer on the surface improves the corrosion resistance and wear resistance of the screens, which can effectively extend the life of their underground work. Simple to operate, convenient to use, large inner drift diameter, easy to carry out pipe string configuration.



Tube Outer Diameter		Tube Weight Kg/m	Screen Inner Diameter mm	Screen Outer Diameter mm	Screen Weight Kg/m	Length m	Tube Outer Diameter		Screen Inner Diameter mm	Screen Outer Diameter mm	Screen Weight Kg/m	Length m	
In	mm						In	mm					
2 3/8	60.3	4.6	50.6	76	11.6	1.6-12.5	5	127	15	112	150	29	1.6-12.5
2 7/8	73	6.4	62	89	14.7	1.6-12.5	5 1/2	139.7	17	124.3	162	33.9	1.6-12.5
3 1/2	88.9	9.2	76	108	19.5	1.6-12.5	6 5/8	168.3	24	150.4	192	43.5	1.6-12.5
4	101.6	9.5	90.1	124	21.5	1.6-12.5	7	177.8	26	159.4	202	48.5	1.6-12.5
4 1/2	114.3	11.6	101.6	136	24.3	1.6-12.5							

Stainless Steel Wire Mesh

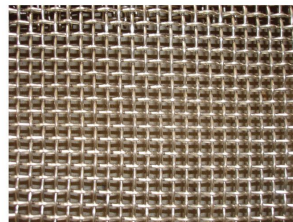
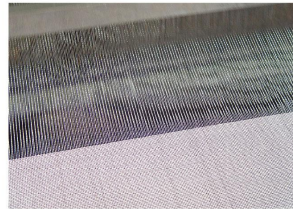


Material: 302, 304, 304L, 316, 316L, etc.
 Weaving Pattern: Plain weave and twill weave.
 Performance: Excellent resistance against acid,alkali,heat,pull and wear.
 General Usage: Mud net for the oil industry,filter screen for electroplating industry,they all have excellent performance.
 Our factory can design and manufacture various products to meet customer's needs.



Mesh/Inch	Diameter mm	Aperture mm	Mesh/Inch	Diameter mm	Aperture mm
2	1.8	10.90	70	0.14	0.223
3	1.6	6.866	80	0.12	0.198
4	1.2	5.15	90	0.11	0.172
5	0.91	4.17	100	0.10	0.154
6	0.80	3.433	120	0.08	0.132
8	0.60	2.575	140	0.07	0.111
10	0.55	1.990	150	0.06	0.109
12	0.50	1.616	160	0.06	0.099
14	0.45	1.362	180	0.053	0.088
16	0.40	1.188	200	0.053	0.074
18	0.35	1.061	250	0.04	0.062
20	0.30	0.970	300	0.035	0.050
26	0.28	0.696	325	0.03	0.048
30	0.25	0.597	350	0.03	0.043
40	0.21	0.425	400	0.025	0.0385
50	0.19	0.318	500	0.025	0.0258
60	0.15	0.273	635	0.020	0.020

Roll width 0.4m-8m

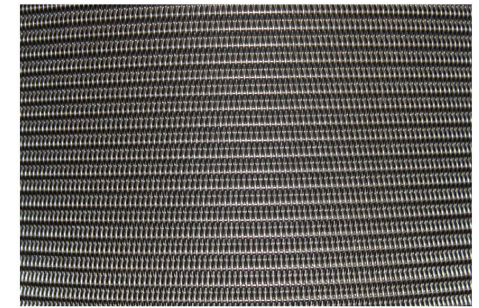


Dutch Wire Cloth

Generally made of SUS302,304,304L ,316,316L stainless steel wire materials,our stainless steel wire mesh products, with its excellent resistance against acid,alkali,heat, pull and wear, are extensively used in the industry of oils, chemicals,rubber, tyre manufacturing,metallurgy, pharmaceuticals, food, ect.

Plain Dutch Weave Wire Mesh				
NO.	Mesh/Inch (Warp×Weft)	Diameter	Aperture	Kg/m ²
32#	8×62	0.63mm×0.45mm	300	5.42
40#	10×79	0.50mm×0.355mm	250	3.16
48#	12×64	0.58mm×0.40mm	280	2.90
55#	14×88	0.40mm×0.30mm	180	2.54
76#	19×140	0.315mm×0.20mm	140	1.88
80#	20×300	0.35mm×0.20mm	—	3.6
95#	24×110	0.355mm×0.25mm	120	2.45
100#	25×140	0.28mm×0.20mm	100	1.95
120#	30×150	0.25mm×0.18mm	80	1.68
140#	35×175	0.224mm×0.16mm	71	1.52
160#	40×200	0.20mm×0.14mm	60	1.40
180#	45×250	0.16mm×0.112mm	56	1.09
200#	50×250	0.14mm×0.112mm	53	1.04
220#	55.5×280	0.14mm×0.10mm	50	0.92
240#	65×330	0.11mm×0.08mm	36	0.71
280#(1)	70×350	0.11mm×0.08mm	35	0.72
280#(2)	70×385	0.11mm×0.07mm	32	0.75
300#	78×700	0.11mm×0.08mm	30	1.39
315#(1)	80×400	0.10mm×0.065mm	40	0.62
315#(2)	80×600	0.10mm×0.06mm	—	—
315#(3)	80×800	0.10mm×0.04mm	—	—
320#	81×780	0.10mm×0.07mm	30	1.22
354#	90×550	0.12mm×0.05mm	—	—

Roll width 1m-1.6m



Dutch Weave Wire Mesh				
NO.	Mesh/Inch (Warp×Weft)	Diameter	Aperture	Kg/m ²
360#	91×787	0.10mm×0.07mm	25	1.24
400#	101×900	0.10mm×0.063mm	20	1.22
472#	120×400	0.10mm×0.075mm	—	—
500#	127×1100	0.07mm×0.05mm	17	0.81
630#	160×1500	0.063mm×0.04mm	15	0.62
650#(1)	165×400	0.07mm×0.06mm	—	—
650#(2)	165×600	0.07mm×0.05mm	—	—
650#(3)	165×800	0.07mm×0.05mm	25	—
650#(4)	165×1100	0.07mm×0.045mm	—	—
650#(5)	165×1400	0.07mm×0.04mm	16	0.76
685#	174×1700	0.063mm×0.032mm	13	0.61
787#(1)	200×600	0.07mm×0.06mm	—	—
787#(2)	200×800	0.07mm×0.05mm	—	—
787#(3)	200×1400	0.07mm×0.04mm	12	0.8
795#	202×1760	0.05mm×0.032mm	10	0.6
850#	216×1860	0.045mm×0.030mm	9	0.5
1000#	254×2000	0.04mm×0.028mm	8	—
1125#	285×2235	0.036mm×0.025mm	7	—
1228#	312×2100	0.035mm×0.025mm	—	—
1250#	318×2235	0.035mm×0.025mm	—	—
1280#	325×2300	0.035mm×0.025mm	5	0.45
1575#	400×3100	0.035mm×0.019mm	3	—

Roll width 1m-1.6m



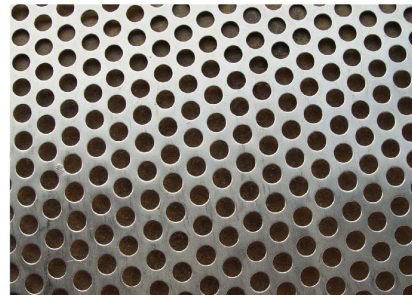
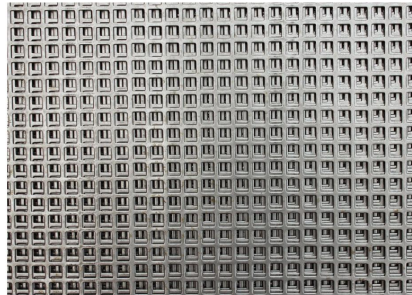
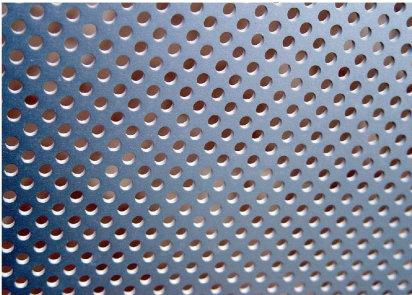
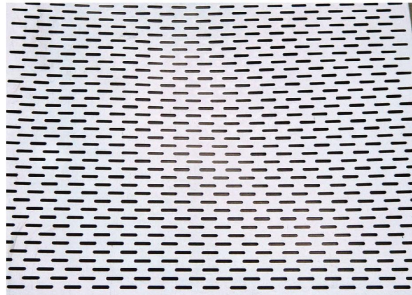
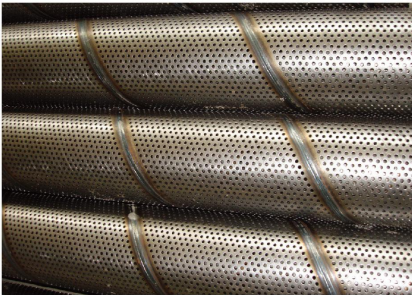
Perforated Metal Series



Materials: Low carbon steel plate, stainless steel plate, aluminium plate, AL Mg alloy plate.

Weaving and characteristics: It is punched to meshes, winding resisting, aging-resisting, surface of meshes is smooth, strong and durable.

Usage: Used in filter of automobile's internal combustion engine, sieving of mine, medicine, grain, sound insulation of room, ventilating of grain depot, etc.



Steel Grating



Steel grating is made of flat steel and bars by welding with certain distances. The products enjoy the features of high strength, light structure, high bearing, convenience for loading and other properties. The hot dipped zinc coating gives the product excellent anti-corrosion.

Steel grating is widely used in the platforms, corridors, bridges, well covers, stairs fencing for petroleum, chemical, powder plant, waste treatment plants, civil engineering projects and environmental protection and so on.

